



POWERLYTICS

POWERFUL DATA, SMARTER DECISIONS

Powerlytics New Recession Tools Help Banks and Lenders Improve Portfolio Risk Analysis in an Economic Downturn

The Powerlytics Recession Impact Score and Recession Short-Term and Long-Term Recovery Scores are three new tools that can help your business better understand which customers and which areas within a business may be most impacted by another recession.

These tools were developed utilizing the Powerlytics proprietary database that includes over 1,000 individual data points for over 200 million adults and the financial statements of over 30 million for profit companies developed from their respective IRS-filed tax returns. Each Score was developed by looking at the 2008 recession and its impact on every residential nine-digit zip code (ZIP+4). Each ZIP+4 has 3-4 households on average and with approximately 40 million in the U.S., it is a very granular measure.

The Powerlytics Recession Impact Score is developed by looking at the pre-recession financial strength of each ZIP+4 across the U.S. and then analyzing the change that occurred during the recession and measuring the impact of that change. The Powerlytics Short Term Recession Recovery Score measures the degree of improvement in the first full year after the Recession and the Long-Term Score measures the recovery through 2019.

The Recession Impact Score can assist with understanding which customers may be impacted the hardest by another recession and may require additional assistance or support. They also help identify where there may be additional risk that should be accounted for within a business. The Recession Recovery Scores can provide additional insight into what areas may be better situated for a quicker recovery versus a prolonged recovery period.

High Correlation Between Loan Default and Powerlytics Recession Scores

Powerlytics' clients have discovered that these scores have a very high correlation with loan portfolio charges-offs. Lower Recession Scores indicate areas that can withstand an economic shock and recover from an economic shock better than those areas with higher scores. As the three charts below illustrate, while borrowers in the higher scoring areas were the smaller population for this lender, they had a significantly higher charge-off percentage.

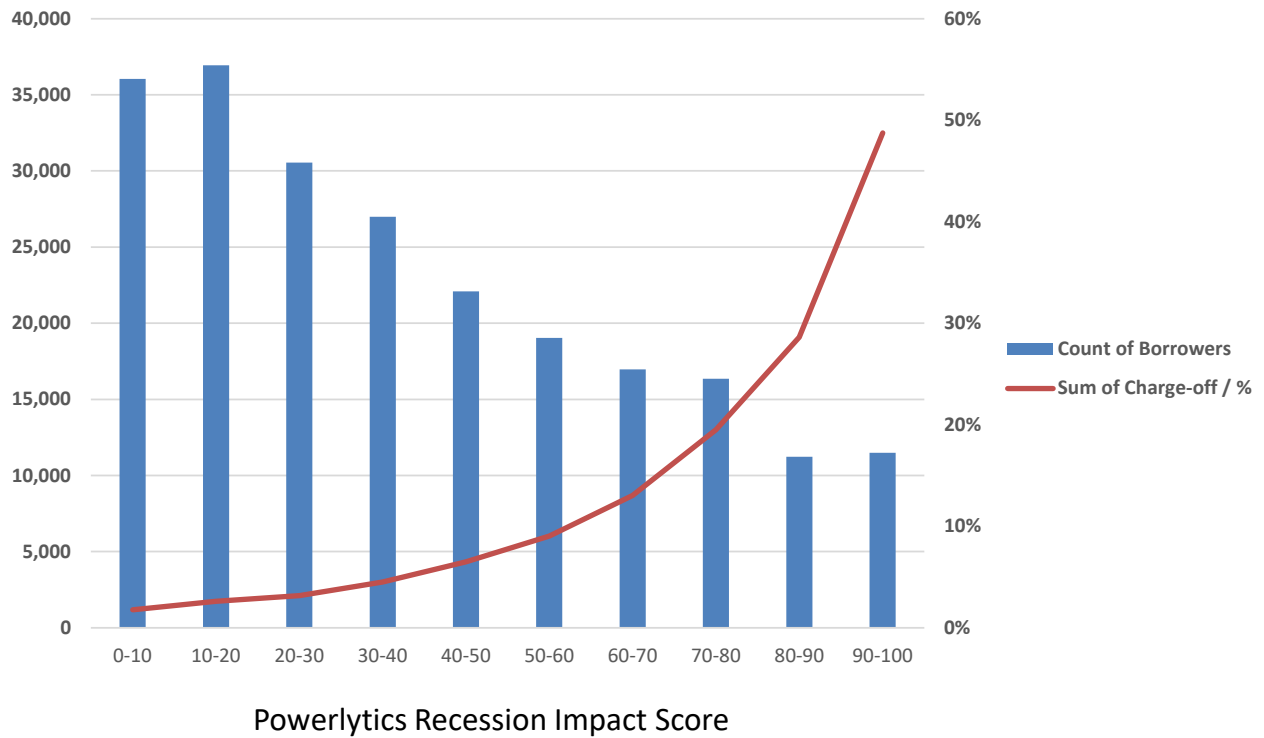


POWERLYTICS

POWERFUL DATA, SMARTER DECISIONS

Chart 1 – Illustrates that the loan charge-off percentage for the borrowers that had **Recession Impact Scores** in the areas that fell in the top 10% of the most severely impacted areas in the last recession had a charge-off rate more **2,600 times higher** (48.75% vs. 1.76%) than those that fell in the best 10%.

Charge-off Percentage by Recession Impact Score



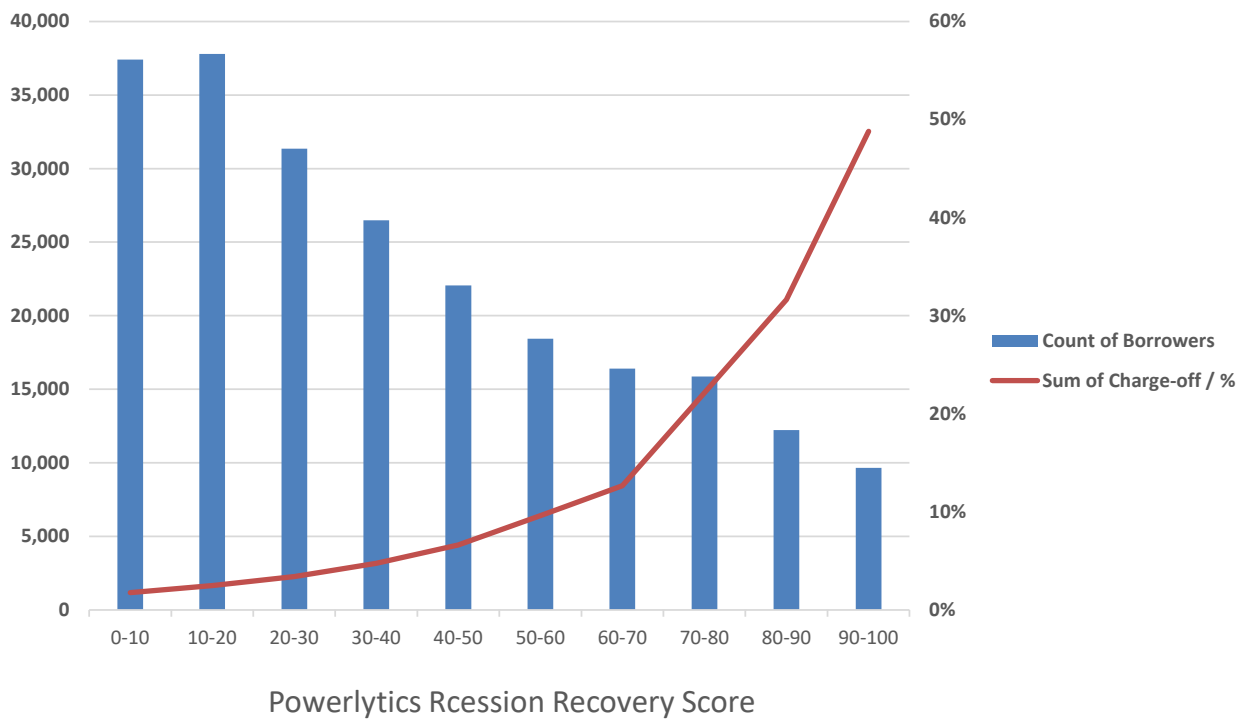


POWERLYTICS

POWERFUL DATA, SMARTER DECISIONS

Chart 2 - Illustrates that that the loan charge-off percentage for the borrowers that had **Short-Term Recession Recovery Scores** in the areas that fell in the top 10% of the most severely impacted areas in the last recession had a charge-off rate more **2,600% higher** (48.8% vs. 1.78%) than those that fell in the best 10%.

Charge-off Percentage by Recession Recovery Score

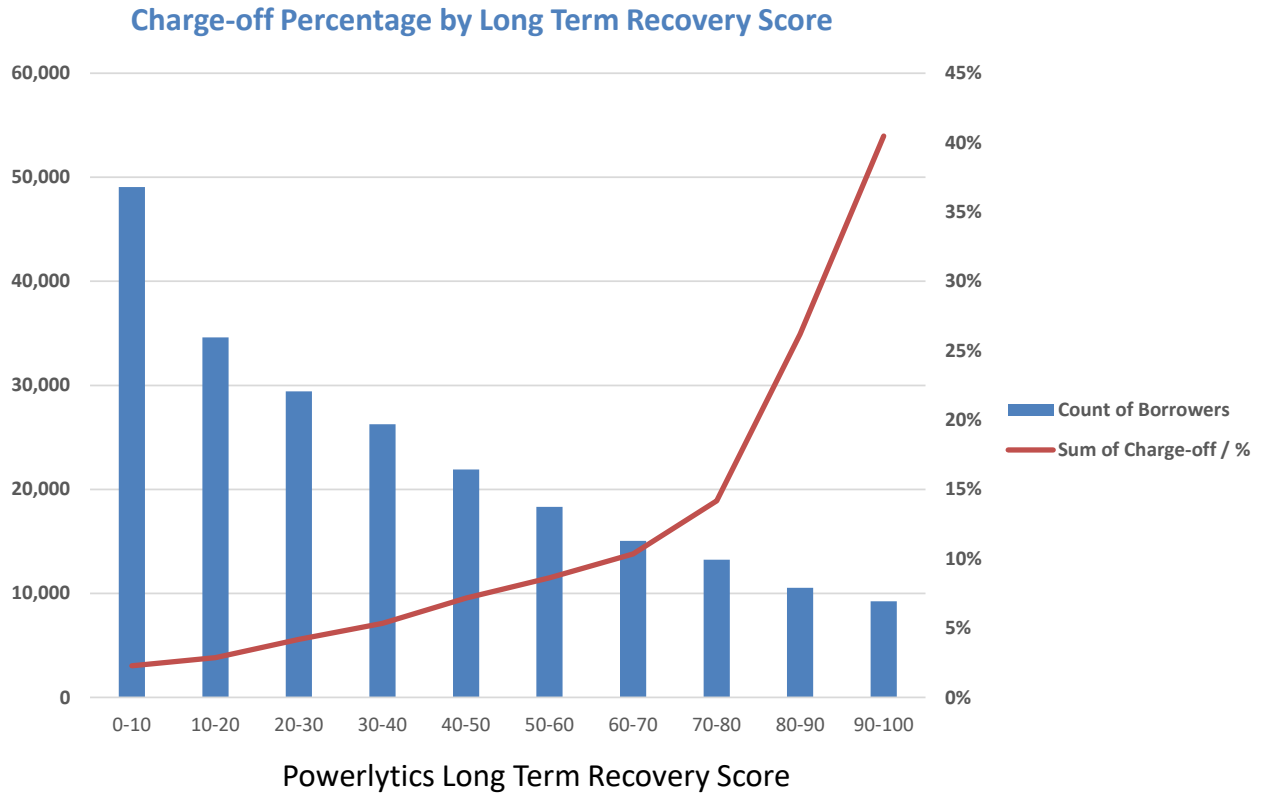




POWERLYTICS

POWERFUL DATA, SMARTER DECISIONS

Chart 3 – Illustrates that the loan charge-off percentage for the borrowers that had **Long-Term Recession Recovery Scores** in the areas that fell in the top 10% of the most severely impacted areas in the last recession had a charge-off rate more **1,600% higher** (40.47% vs. 2.28%) than those that fell in the best 10%.



For more details, contact your Powerlytics sales representative or contact us at sales@powerlytics.com.